

YQSH 易科士

提升校企的后勤管理水平

2012

协助校企规范的管理形象

您身边的智能专家 YOUR SIDE OF THE INTELLIGENCE EXPERTS





TCP/IP



1



2

3





“ / ”

“ ” “ ” “ ” “ ”

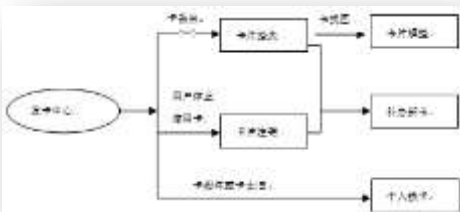


EXCEL TXT XML HTML



IC

IC



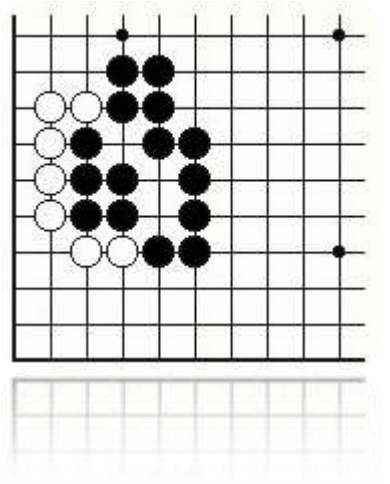
IC



“ ”



“ “ “ “





➤ ARM7

- LCD 128*64
- 12V DC-1A
- <3W
- ID Mi fare One CPU
- RF-SIM
- 125KHZ 13.56MHZ 2.4GHZ
- 0-5CM
- <100MS TMAX<500MS;
- 8
- RS232-38. KBPS;
- CAN BUS-20KBPS~100KBPS
- TCP/IP-10M/100M
- GPRS-100KBPS
- <1KM
- U 32G
-
- 1500MA/H
- 8
- 1800mm*1100mm*36mm
- 300g
- -20 ~70
- 10%-90%

➤ 51



- 180V-250V
- <50W
- CAN BUS— 20Kbps 100Kbps TCP/IP
- 10M
- CAN 8
- 1
- 315mm*235mm*84mm
- 4000g
- -5 50
- 10% 90%



➤

- 180V-250V
- <50W
- CAN BUS — 20Kbps 100Kbps
- TCP/IP— 10M
- -5 50
- 10% 90%



- 180V-250V
- <50W
- CAN BUS — — 20Kbps 100Kbps
- TCP/IP— — 10M
- CAN 8
- 1
- 315mm*235mm*84mm
- 4000g
- -5 50
- 10% 90%



ISO9001: 2008

CQC

CCC

IC

" " "

" " "

100

ARM

POS

"

"

"

"